



ENGLISH HERITAGE

---

# Using NCAs for the Historic Environment

**Liz Clare**

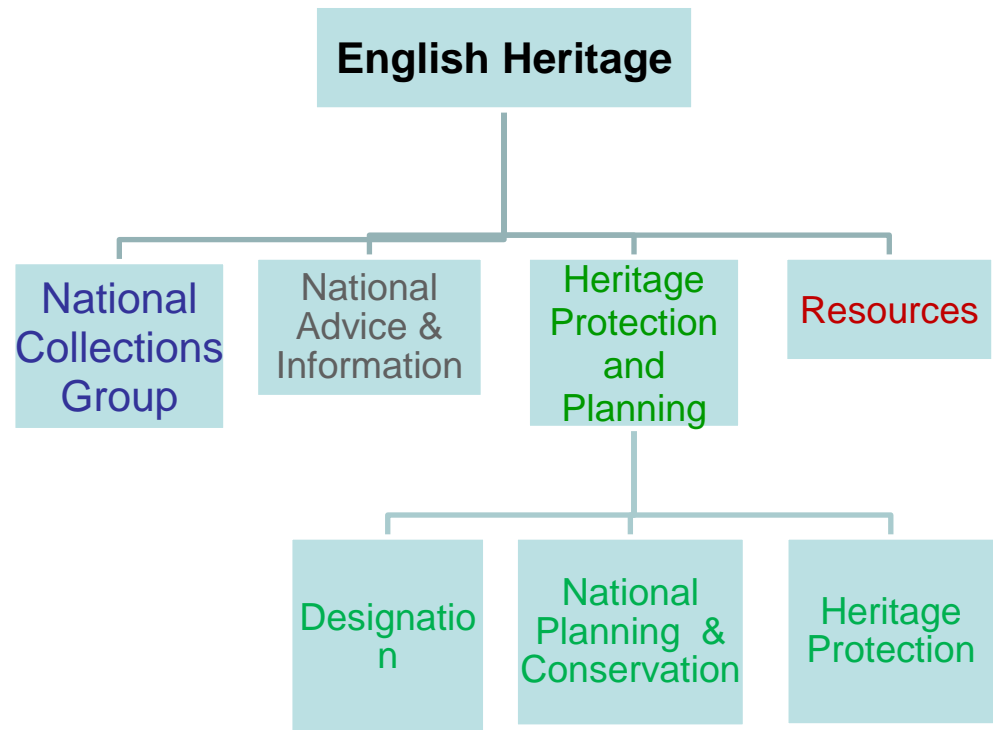
Historic Places Team,  
English Heritage South West



*‘National expertise  
locally delivered’*

## Terms of Engagement:

- Prevent harm
- Enhance significance
- Reduce risk
- Facilitate new uses and heritage-led regeneration



# Significance-based approach



ENGLISH HERITAGE

---

## *Conservation Principles*

- Principle 1: The historic environment is a shared resource
- Principle 2: Everyone should be able to participate in sustaining the  
historic environment
- Principle 3: Understanding the significance of places is vital
- Principle 4: Significant places should be managed to sustain their values
- Principle 5: Decisions about change must be reasonable, transparent and consistent
- Principle 6: Documenting and learning from decisions is essential

# Heritage values



ENGLISH HERITAGE

- **Evidential** value: the potential of a place to reveal evidence about past human activity
- **Historical** value: the ways in which past people, events and aspects of life can be connected through a place to the present.
- **Aesthetic** value: the ways in which people draw sensory and intellectual stimulation from a place.
- **Communal** value: the meanings of a place for the people who relate to it, or for whom it figures in their collective experience or memory.

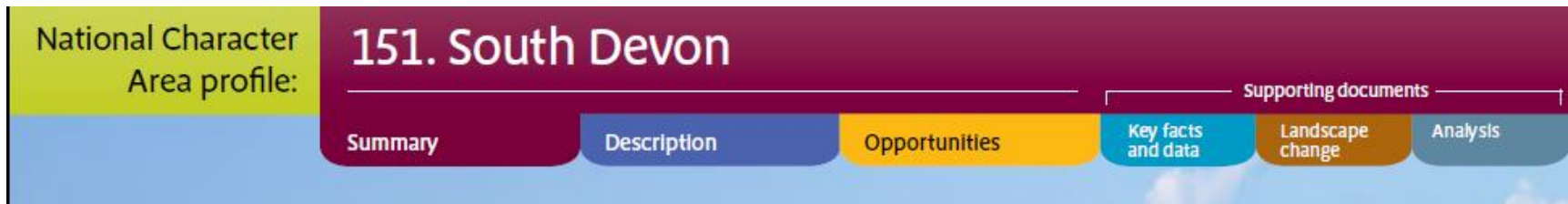


# How can NCAs help?



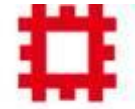
ENGLISH HERITAGE

- Significance-based approach
- Identifies and accepts change
- Helps manage change constructively



The screenshot shows the 'National Character Area profile' for '151. South Devon'. The interface includes a navigation bar with the following sections: 'Summary', 'Description', 'Opportunities', 'Key facts and data', 'Landscape change', and 'Analysis'. The 'Key facts and data', 'Landscape change', and 'Analysis' sections are grouped under the heading 'Supporting documents'.

# Managing change



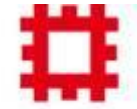
ENGLISH HERITAGE



**By 2015, we aim to remove:**

- **318** assets (around **80** assets per year)
  - **30** BARs
  - **284** SAMs
  - **4** Registered Parks and Gardens

# Statements of Environmental Opportunity



ENGLISH HERITAGE



## Devon Redlands NCA

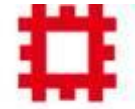
- 17 Registered Parks and Gardens – a particularly high concentration. Two are at Risk.
- Villa and villa landscape parks on east shore of Exe
- Pynes (Cowley Bridge), Downes, (Crediton)
- Large landscape parks – Mamhead, Killerton, Powderham
- Follies (eg Haldon Belvedere) distinct landmarks across area



- **SEO 3: Protect and manage the distinctive character of the landscape, the natural beauty, scenic quality, historic environment and geological features. Enhance recreational resources, access to nature and heritage assets, particularly along the coast, to ensure public benefit and enjoyment.**
- Conserving and managing historic parklands, including the planting of trees that are sensitive to historic character. Encouraging appropriate management of ancient and veteran trees and the retention of deadwood.



# NCAAs in practice



ENGLISH HERITAGE

---



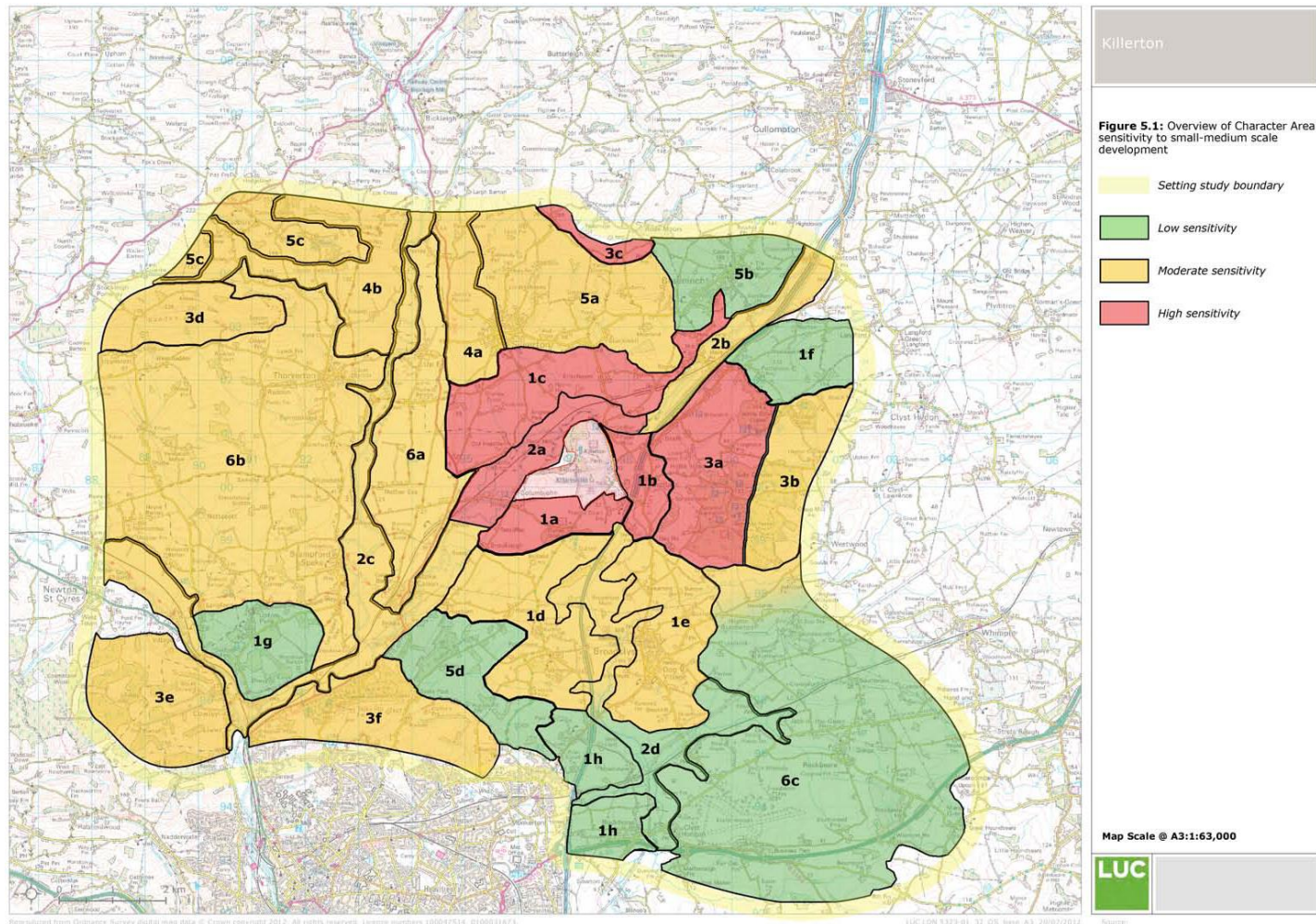
- Killerton Park, Devon
- Setting study for the National Trust (2012)



# Managing change



ENGLISH HERITAGE





ENGLISH HERITAGE

---

Thank you

[www.english-heritage.org.uk](http://www.english-heritage.org.uk)

NHPP: <http://www.english-heritage.org.uk/professional/protection/national-heritage-protection-plan/>

Conservation Principles: [www.english-heritage.org.uk/professional/advice/conservation-principles/constructive-conservation/](http://www.english-heritage.org.uk/professional/advice/conservation-principles/constructive-conservation/)

Heritage at Risk: <http://www.english-heritage.org.uk/caring/heritage-at-risk/>

elizabeth.clare@english-heritage.org.uk