



Alex Sherman
Scheme Manager
Avalon Marshes Landscape Partnership

T: 01458 860556

E: alex.sherman@somersetwildlife.org

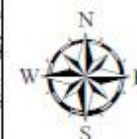
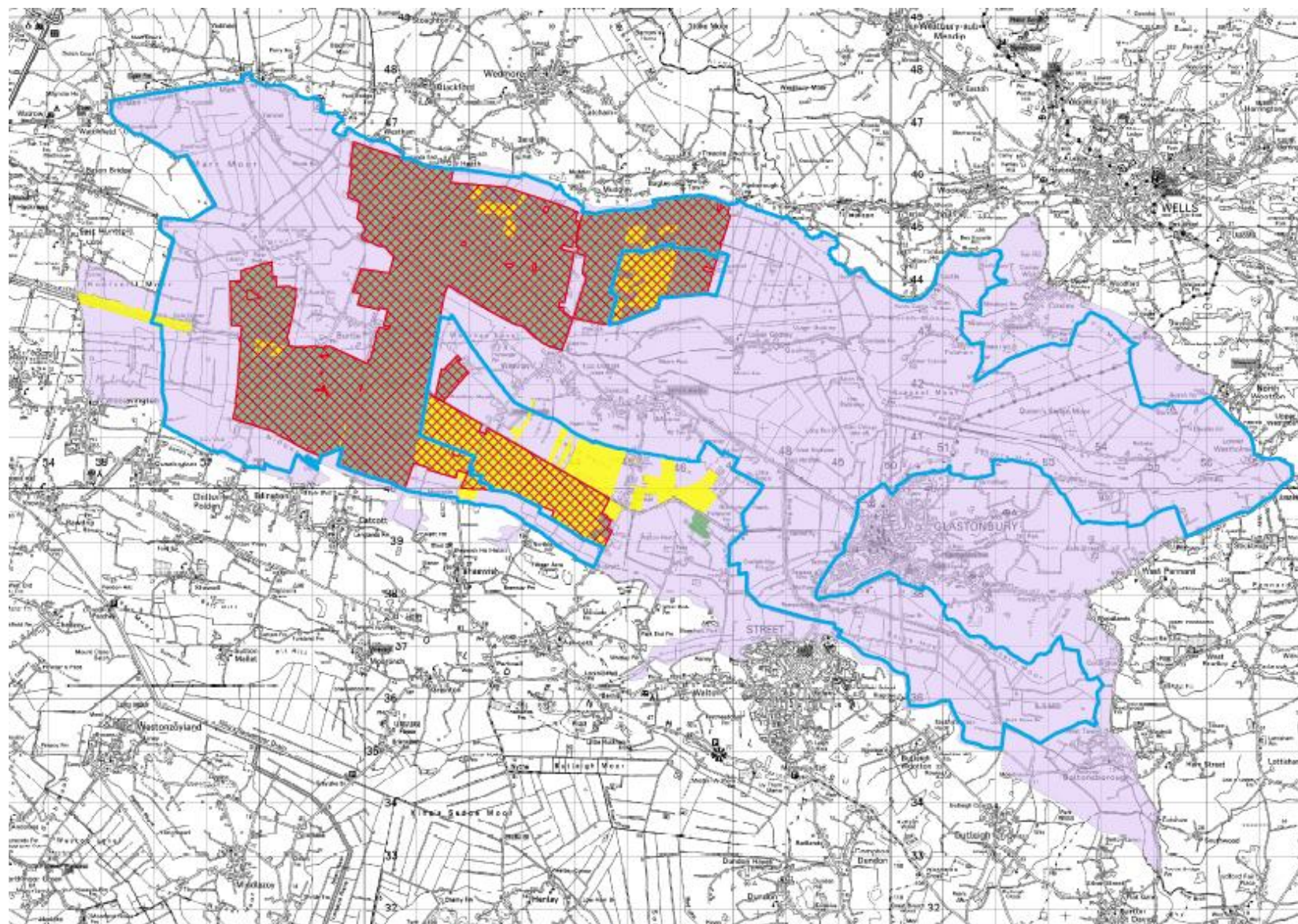
National Character Area 142 Somerset Levels & Moors

Note: In most instances, the NCA boundary is not precisely mapped and should be considered as a zone of transition between NCAs.









1:65,000

- | | | |
|--------------------------------|-------------------------|---|
| Environmentally Sensitive Area | Ramsar | Sites of Special Scientific Interest |
| Special Protection Areas | National Nature Reserve | The Avalon Marshes Landscape Partnership Area |

Reproduced by permission of Ordnance Survey on behalf of HMSO.

© Crown copyright and database right 2009.

All rights reserved. Ordnance Survey Licence number 100022021. Map Ref 09-216b

Snapshot of the Avalon Marshes Landscape Partnership Scheme

- £2.7 million total fund – mostly through HLF
- 6 new jobs
- 2 new apprenticeships
- Funding up to the end of 2015 (and beyond?)
- Over 60 new projects
- Biodiversity and heritage restoration
- Community projects
- Training
- Access routes
- Interpretation



Avalon Marshes LPS and the NCA

HLF Landscape Partnership support

Opportunity and investment to make a big impact on a broad range of key contemporary issues

Avalon Marshes Partnership

Group firmly puts the context of the Avalon Marshes landscape area within the Somerset Levels & Moors (NCA142)

NCA142

An informed evidence base and set of landscape objectives against which to measure / evaluate success

SEO 1: Manage and plan for change in the function of the network of watercourses, water management infrastructure and wetland habitats across the Levels & Moors to provide benefits in improved flood management, water and soil quality, viable agricultural futures, protection of sub-soil archaeology and to increase the range and extent of habitats and species and their resilience to climate change.

- Enriching Biodiversity and Habitats
- Conserving Natural Heritage – HLS Payments
- Conservation of Waterlogged Archaeological Sites
- Interpreting landscape change in the Avalon Marshes
- Enabling volunteers
- Young Volunteers
- Themed publication for farmers, landowners and managers
- Botanical survey and recording skills
- Species survey and recording skills
- Wetland Bird Survey & Recording Skills
- Tree Pollarding management skills
- Communicating heritage
- Education Officer

SEO 2: Manage the predominantly pastoral agricultural landscape to ensure and enhance the future of sustainable farming, strengthening landscape character, protecting soils, particularly peat soils, and water, and enhancing biodiversity through improved integration of activity, creating more, better and more resilient habitats and ecological networks.

- Sustainable Management of Reed Beds
- Grazing Animals, Sward Control and Floral Diversity
- Restoration of Somerset's Lowland Mires
- 2 Kingfisher banks
- Reed bed management skills
- Combining the conservation of wet grassland with farming
- Avalon Marshes Diploma
- Environmental Conservation Apprenticeship
- Volunteer support courses – brush-cutting
- Archaeological training
- Heritage skills training
- Volunteer Officer



From Opportunities to Analysis

Avalon Marshes' contribution

Contributing to 11 of the 19 Ecosystem Services identified in NCA 142

	SEO 1	SEO 2
Food provision	↔	↑
Biomass provision	↗	↑
Regulating water quality	↑	↗
Regulating soil quality	↑	↑
Regulating soil erosion	↗	↗
Pollination	↑	↑
Sense of place / inspiration	↔	↑
Sense of history	↑	↑
Tranquility	↔	↑
Recreation	↑	↑
Biodiversity	↑	↑

Conclusions

- The Avalon Marshes Landscape Partnership offers small investment but significant.
- To make our projects purposeful they must deliver against contemporary issues, priorities and opportunities.
- This approach is Partnership driven and gives us evidence to justify future opportunities for our work.
- HLF can in turn evidence that their investment is meeting nationally identified priorities.
- Adoption of this approach from the beginning of our work ensures a positive legacy.

